



# **Elective Home Education (EHE)**

## **Annual Report 2015/16**

<b>The Elective Home Education Team</b>	<b>3</b>
<b>Developments in 2015/16</b>	<b>3</b>
<b>Case summary 2015/16</b>	<b>3</b>
<b>Comparison with statistical neighbours</b>	<b>4</b>
<b>EHE as percentage of Oxfordshire's school population</b>	<b>4</b>
<b>Cases on EHE register by academic year</b>	<b>4</b>
<b>New and closed cases</b>	<b>5</b>
<b>Reasons for EHE</b>	<b>6</b>
<b>Cases by gender</b>	<b>6</b>
<b>Cases with EHCP</b>	<b>7</b>
<b>Attendance and exclusions history</b>	<b>7</b>
<b>National curriculum year</b>	<b>7</b>
<b>Ethnicity</b>	<b>8</b>
<b>Learning Styles</b>	<b>9</b>
<b>Hub involvement</b>	<b>10</b>
<b>Year 11 destinations</b>	<b>10</b>
<b>Pre-EHE Base</b>	<b>11</b>
<b>Education Act Provision</b>	<b>12</b>
<b>Process for removal from school roll</b>	<b>12</b>

## **The Elective Home Education Team**

The Elective Home Education (EHE) Team is staffed by one FTE Lead EHE Officer and three part time EHE Link Workers (working the equivalent of one FTE).

### **Developments in 2015/16;**

- Due to public consultation, EHE policy and procedures have been revised.
- Visits have been prioritized. Repeat visits to families who we know to be providing education have ceased in order to concentrate on first visits. This allows more resource to ensure that our most vulnerable families are identified and appropriate action is taken early.
- As a result of liaising with the CEO of Examination Officers Association, details of external exam centers which accept EHE students is now available as part of the information pack issued to parents.
- A series of successful meetings with Abingdon and Witney College have taken place. Information has been shared to facilitate good practice and to promote the integration of 14-16 yrs. olds into college placements. Safeguarding has been a priority in discussions, so that the process of removal from school roll is monitored carefully.
- We have liaised with Youth Engagement and Opportunities team to ensure NEET information is communicated to Year 11's. Destinations post year 11 EHE students are sought and tracked. This continues to be ongoing and information is now shared earlier in the year to ensure students have the correct information and time to plan and make informed choices.
- Health Service information is shared with parents on the latest immunization sessions available to them.
- EHE Officer has been invited by the Community Pediatric Service to give a talk on the legal framework surrounding Elective Home Education. This will include Pediatric Doctors, Consultants, Doctors in training, the multi-disciplinary team, therapists and the Autism Diagnostic Service.

### **Case Summary 2015/16**

Total registered EHE during 2015/16	460
New	167
Closed	156
Returned to school	90
Gypsy, Roma and Traveller (GRT)*	29
Referred to County Attendance Team for a School Attendance Order	2
Statements/EHCP	28
Record of Social Care involvement (open/closed)	177
Young Carers	22
Local Authority Care	7

\*GRT figures based on known travellers, not ethnicity

## Comparison with Statistical Neighbours

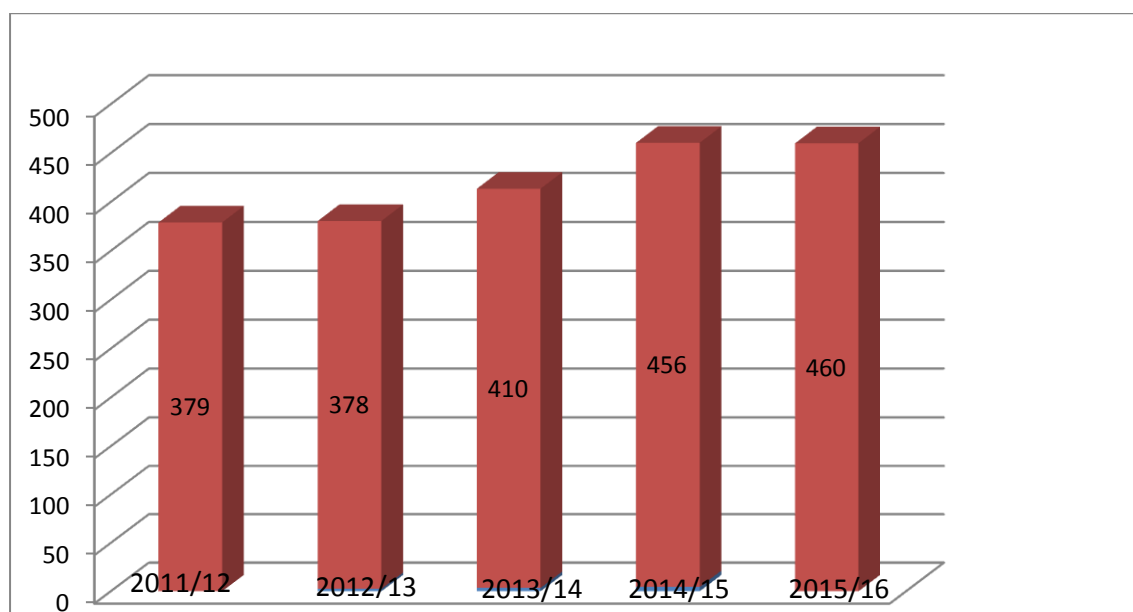
Local Authority	Total registered EHE 2014/15	Number of new cases 2014/5	% of total registered	Total registered EHE 2015/16	Number of new cases 2015/16	% of total registered
Cambridgeshire	776	322	43%	953	379	40%
Gloucestershire	659	306	46%	716	307	43%
<b>Oxfordshire</b>	<b>456</b>	<b>202</b>	<b>44%</b>	<b>460</b>	<b>167</b>	<b>36.3%</b>

## EHE as a percentage of the Oxfordshire's School Population

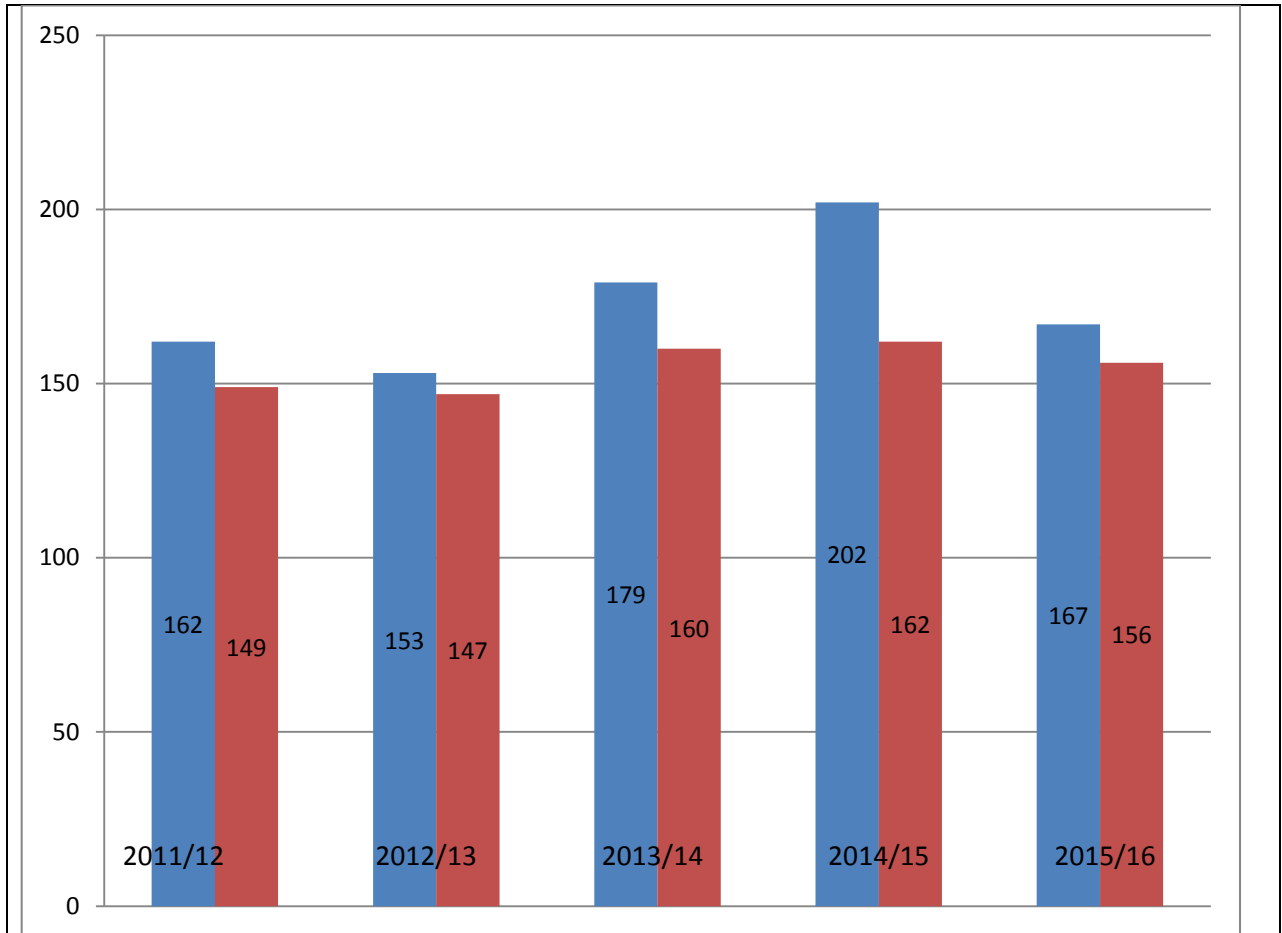
Academic Year	Oxfordshire's School Population	Total EHE cases registered over the academic year	EHE as a percentage of the school population
2011/2012	87,889	379	0.43%
2012/2013	88,274	378	0.43%
2013/2014	89,263	410	0.5%
2014/2015	91,663	456	0.5%
2015/2016	92,241	460	0.5%

EHE as a Percentage of the School Population has stayed the same over the last three academic years

## Cases on EHE Register per Academic Year



**New and Closed Cases**



New Referrals	162	153	179	202	167
Closed Referrals	149	147	160	162	156

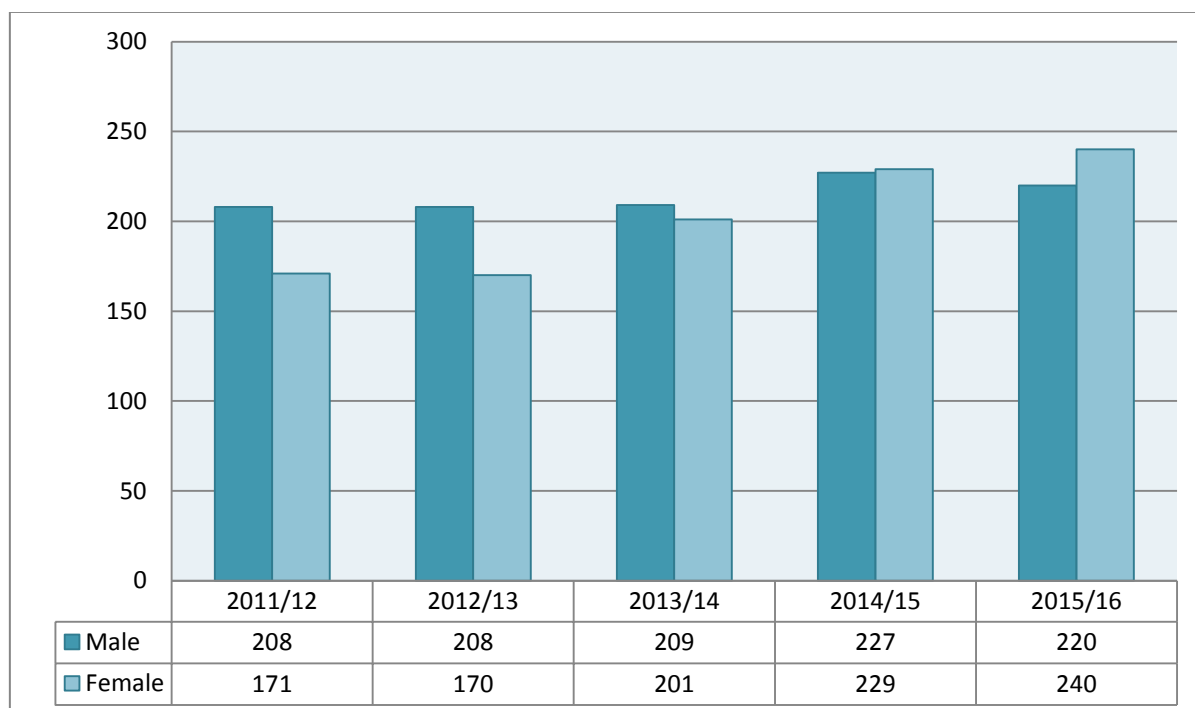
The statistical average is 172 cases per year over the last five academic years.

## Reasons for Elective Home Education

Reason	Number of cases				
	2011/12	2012/13	2013/14	2014/15	2015/16
Bullying	28	27	24	22	25
Dissatisfaction with system	81	85	85	62	51
Distance/Access to local School	5	5	13	4	4
Other/Unknown	51	47	64	122	127
Parents Desire for Closer Relations	26	29	27	30	25
Philosophical/Ideological beliefs	28	30	35	35	49
Religious/cultural beliefs	45	56	48	49	55
Special Educational Needs	62	35	42	32	37
Short term intervention	38	48	51	75	60
Unwilling/Unable to attend School	15	16	21	25	27

These statistics are based on main reasons given by parents/guardians (often there are a number of factors contributing to their decision to home educate).

## Cases by Gender



The ratio of male to female home educated young people has been evenly split over the previous years until last year when there was a 9% increase in female cases over male cases.

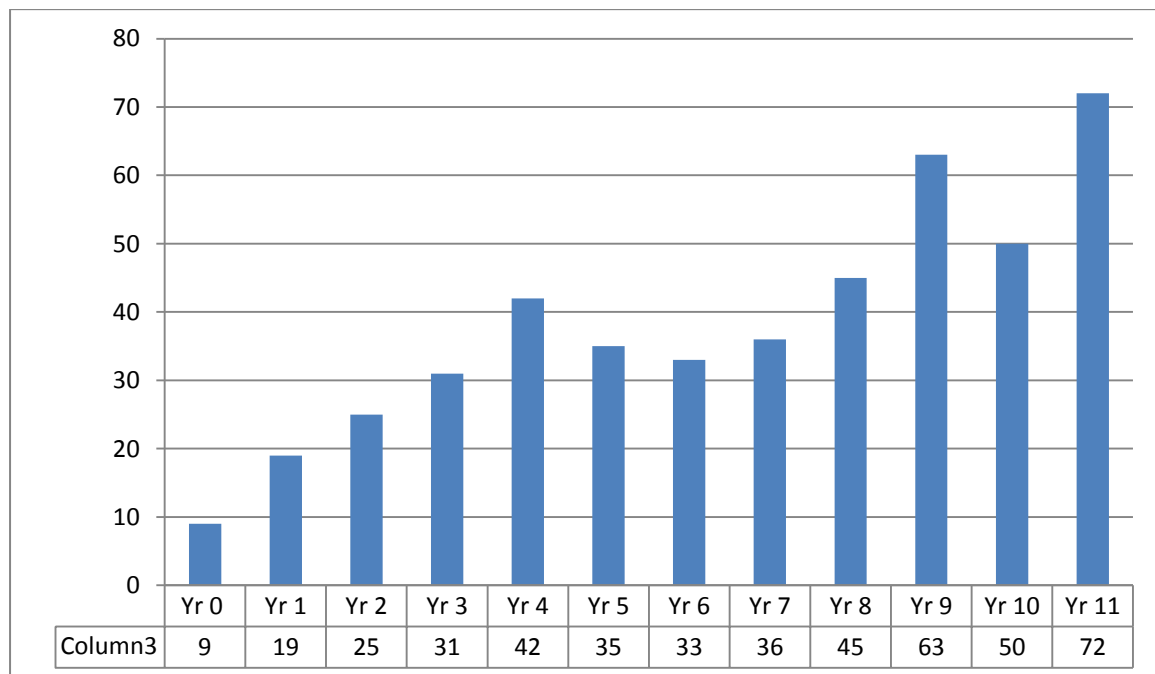
**Cases with Statements of Special Educational Needs/Education Health and Care Plan**

Year	Statement/EHCP
2011/12	18
2012/13	16
2013/14	20
2014/15	26
2015/16	28

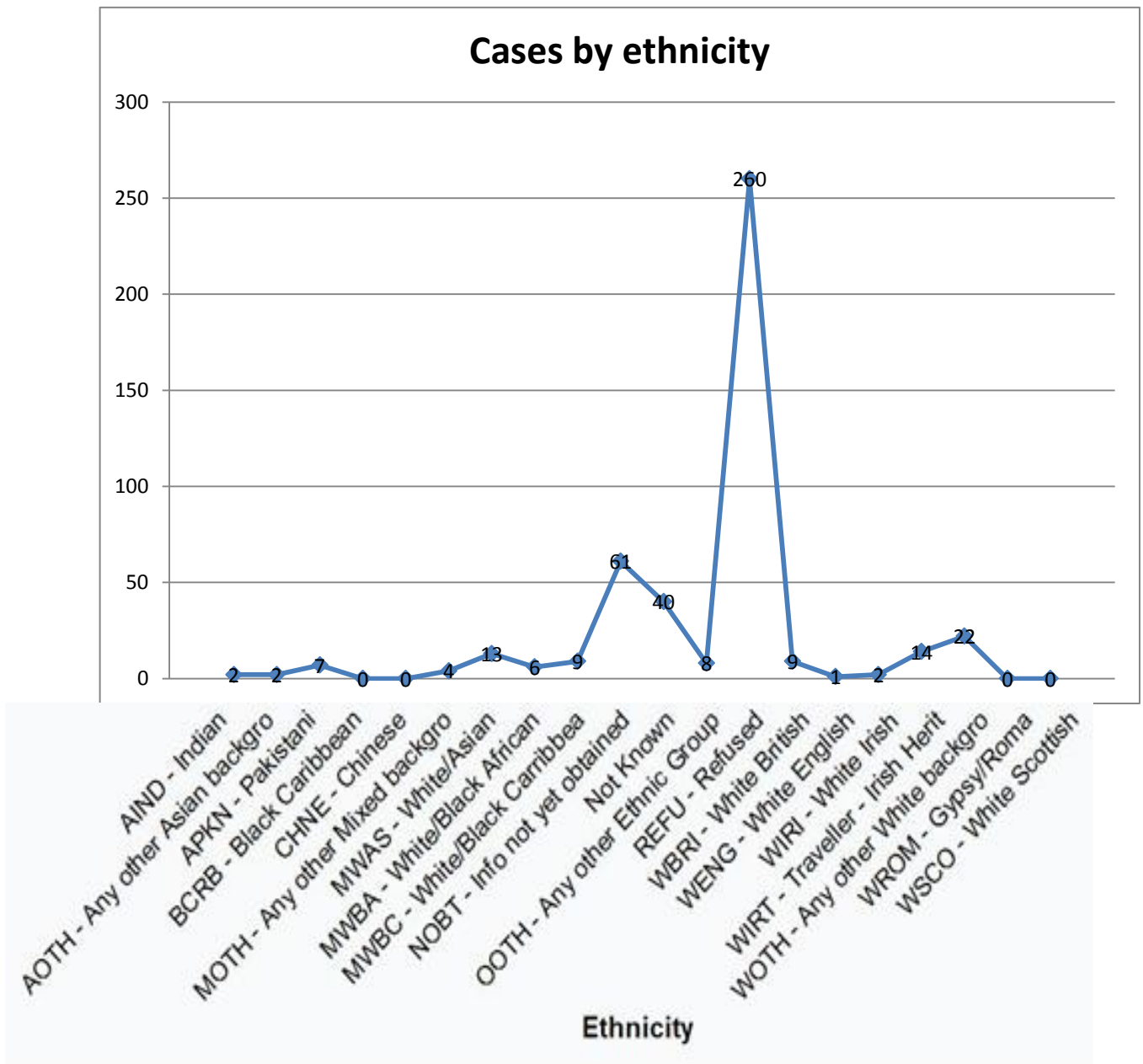
**Attendance and Exclusions History**

	2014/2015	2015/16
Attendance 90% or less (prior to EHE)	194	165
<b>Attendance over 90% (prior to EHE)</b>	<b>68</b>	<b>72</b>
No attendance data available	195	226
Fixed term exclusions history	24	31
Permanent exclusion history	3	3

**Cases by National Curriculum Year**



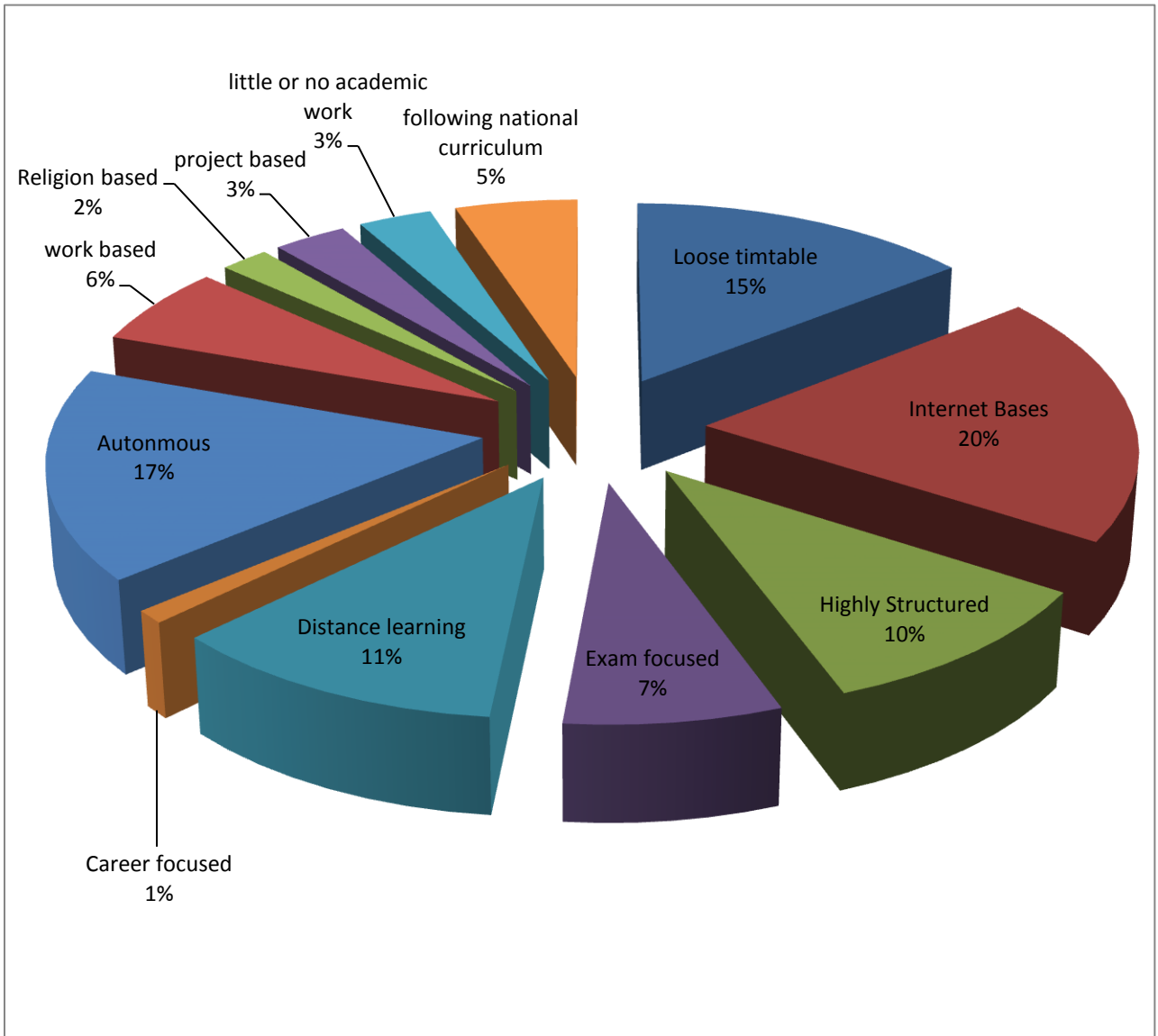
From year 0 to year 11 there has been a 700% increase in students that are Elective Home Educated.



There are 260 cases where parents did not divulge the Ethnicity of the student.



**Learning Style**

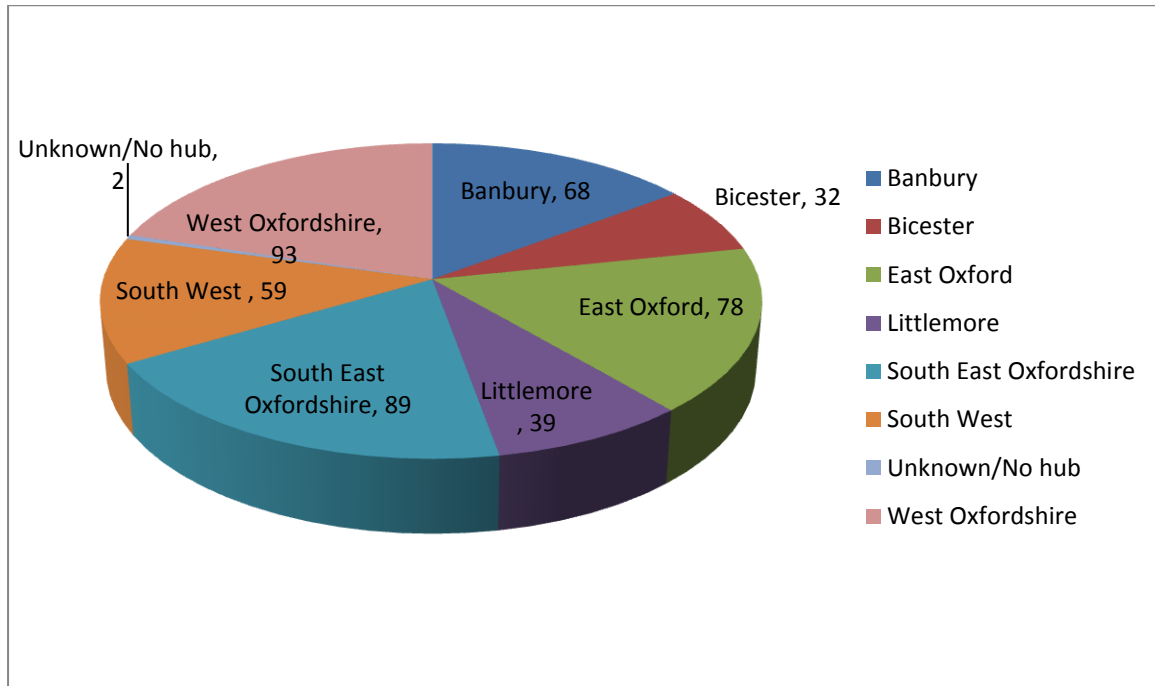


Most Families have more than one learning style; the above is based on the main style given by parents. New ways of learning have emerged recently with the advent of online schools such as Interhigh and locally with Wolsey Hall.

**Pre-EHE Base (new cases) 5 and above**

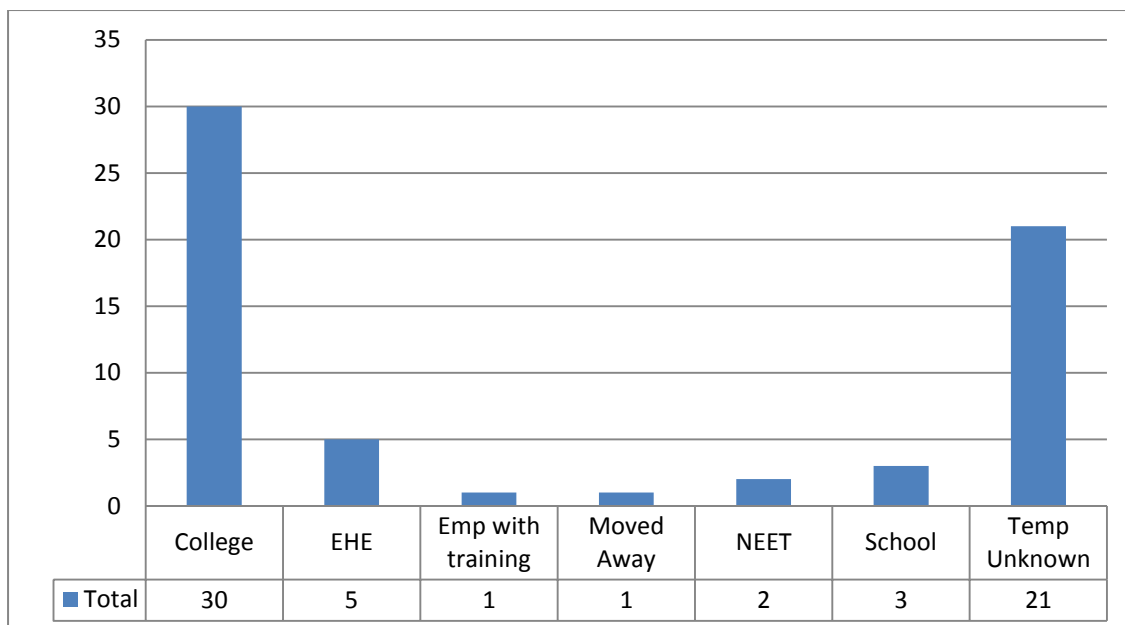
Pre EHE base	Total
A& T out of county school	5
A&T pre school feeder	7
Banbury Academy	5
Chiltern Edge	6
Church Cowley St James Primary	7
Deddington C of E Primary	7
Didcot Girls School	8
Elective home education	12
Faringdon Community College	5
Meadowbrook College	6

**Cases by Hub 2015/16**



Students with open involvement during EHE period = 26  
 Students with closed involvement during EHE period = 53  
 Students with no involvement during EHE period = 381

**YEAR 11 DESTINATIONS**



Almost 50% of year 11s, and possibly more (destinations for 21 cases are currently unknown), went on to College rather than continue with home education. This may suggest a schools issue. The fact that EHE young people can access college courses free of charge pre-16 may mean that, because they are already in the college environment, they are more likely to stay on post-16. A number have gone on to entry level college provision, such as the Gateway Programme.